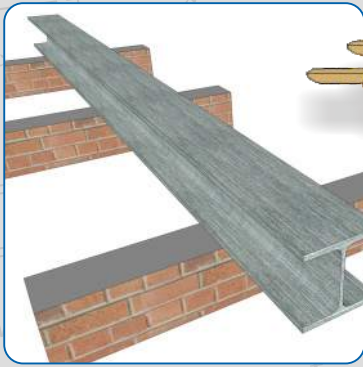
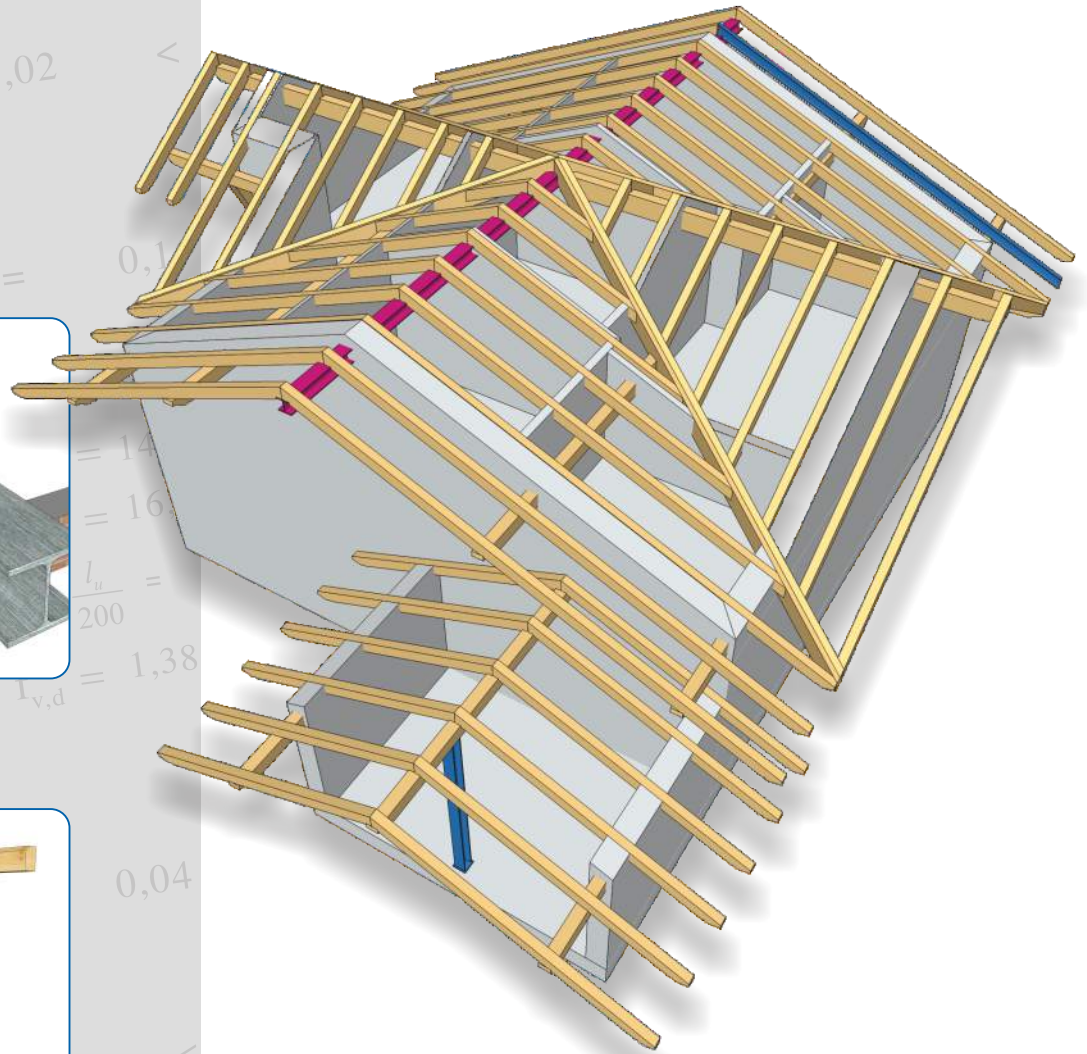


NEW!

Additional Module Steel Sections

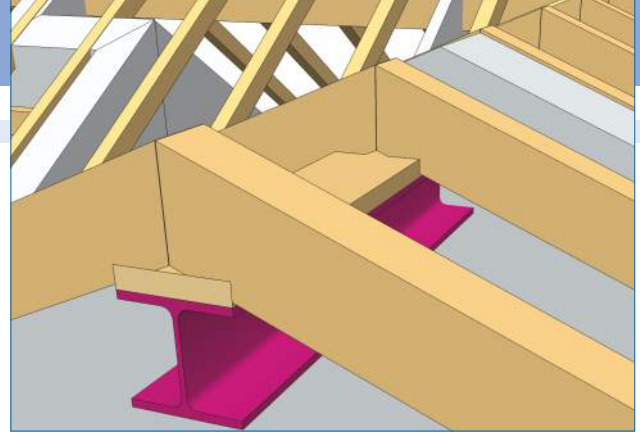
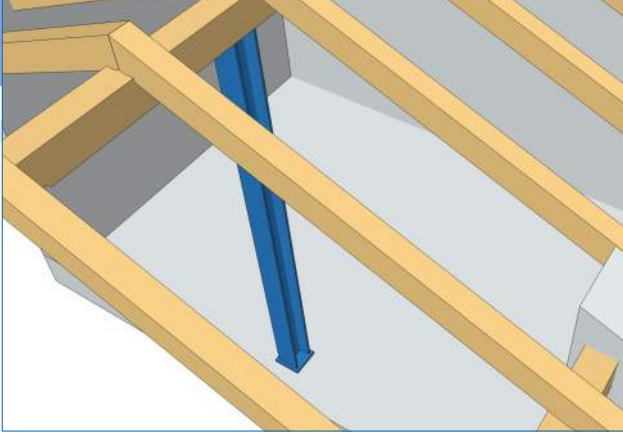
DC Calcs



DC-Calcs Additional Module to Calculate Steel Sections

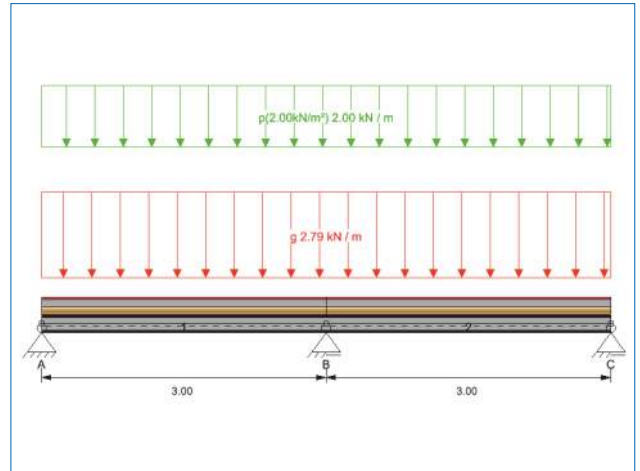
With the new DC-Calcs addition "Steel Sections" you can select and design double symmetrical steel sections in the position types 'Rafter', 'Continuous Beam' and 'Column'. The included material database contains all standard section sizes with different types of steel.

Since the steel sections are available in the regular EC5 modules it is possible to quickly compare wood, steel or cross laminated timber in the same situation, and find the best and most cost efficient solution.



After the steel beam has been designed, similar to the wood design, the program will suggest alternative sections and show the respective capacity utilization.

As usual, the automatically generated structural design document contains all necessary information required by an auditable design. The chosen steel section, input values, calculations, stability and serviceability designs, node and internal forces are listed in a clear and comprehensible document in PDF, Word or Open Office format.



Les avantages de ce module :

- Design of steel sections
 - Calculations according to EN 1993-1-1 respectively DIN 18800-1
 - Design of double symmetric steel sections
 - Comparison wood - steel
 - Suggestion of alternative section sizes
 - Auditable structural design document
- Module 'Steel Section Rafter'
- Module 'Steel Section Continuous Beam'
- Module 'Steel Section Column'



Find out how to order and for more information: DC-Statik • Postfach 13 42
 D-85573 Neubiberg/München • Tel.: +49 (0)1805 214 182 • Fax: +49 (0)89 614 42 144
 Email: kontakt@dc-statik.com • www.dc-statik.com